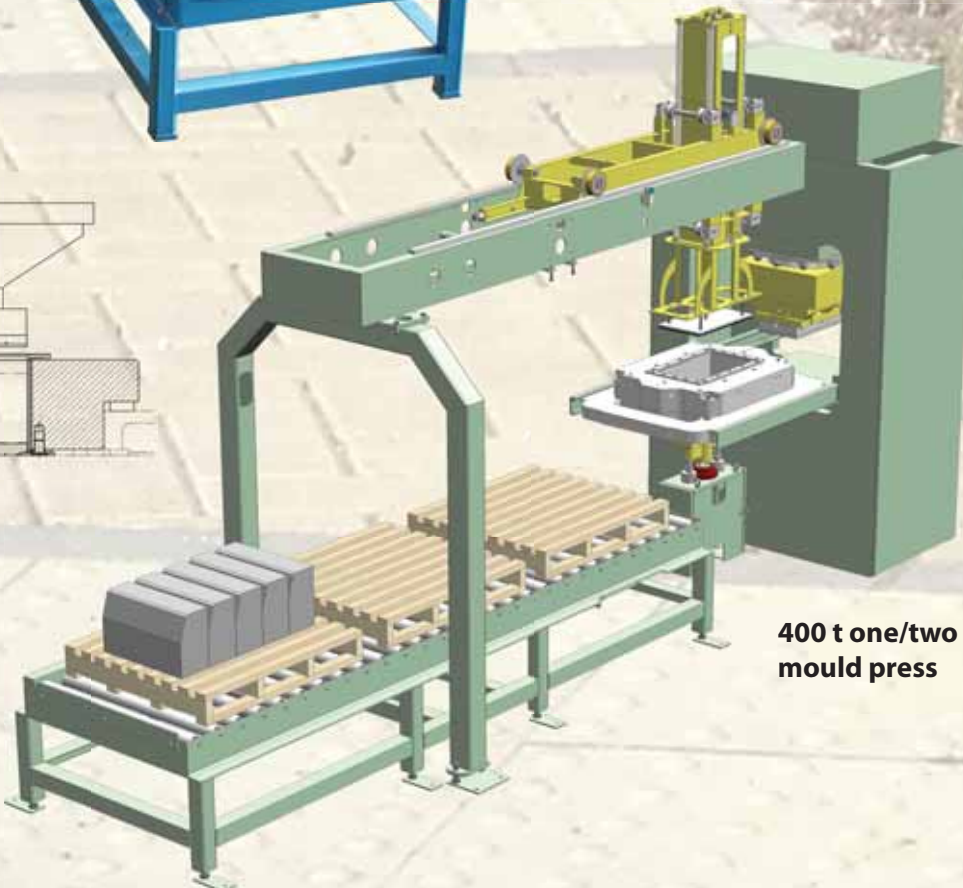
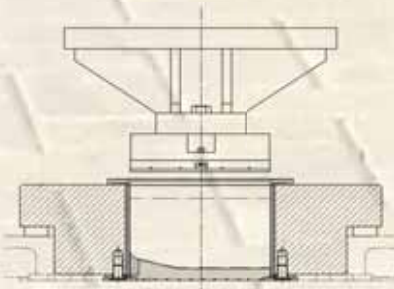


WIL EL MIL
ENGINEERING



400 t three/six
mould press

Wet presses and
equipment for
concrete
kerbstone and
paving slab
production



400 t one/two
mould press

www.wilelmil.co.uk

Wil El Mil Engineering Limited
Gloucester, England

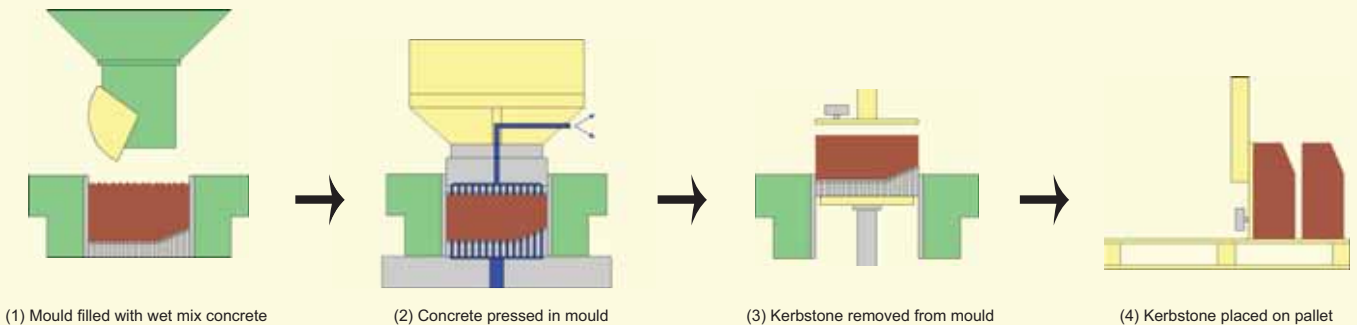
CONCRETE PRESSING TECHNOLOGY

The company

Wil El Mil Engineering is an independent company that has expanded progressively since its establishment in 1974. We have always put quality, customer care and value for money foremost. Our technical design and manufacturing capability has established a reputation for providing secure engineering solutions to worldwide concrete pre-cast customers using the wet pressing process.

- ▶ Over 30 years experience in the wet press process, equipment design and manufacture
- ▶ Continuous improvement and development based on well proven designs
- ▶ In-house technical capability with qualified engineers
- ▶ In-house design of all mechanical, hydraulic, pneumatic, and electrical/electronic control systems including software
- ▶ Designs optimized for maximum productivity and energy efficiency with minimum maintenance
- ▶ In-house manufacture of control panels, PLC systems and inverter drives
- ▶ In-house CNC machining, fabrication, assembly and test
- ▶ Manufacturing based on integrated CAD/CAM systems
- ▶ Mechanical design utilising the latest 3D CAD software
- ▶ Full product service/support in all markets

The wet pressing process



- ▶ Recognised as the process by which the highest quality kerbstones and paving slabs are made
- ▶ No vibration is used ensuring minimum noise levels and maximum machinery and mould life
- ▶ Wet-pressed products comply with the most stringent national and international standards
- ▶ Wet-pressed products are the standard choice for use in harsh environments, especially where exposed to regular freeze/thaw cycles, de-icing salts or sulphate attack
- ▶ Wet-pressed products have a high quality surface finish with minimum cement usage and no additives

Typical pressing configurations:

- ▶ Kerbstones - single pressing
- ▶ Kerbstones - duplex pressing
- ▶ Path edgings - duplex pressing
- ▶ Paving slabs - single pressing - up to 100 cm x 60 cm
- ▶ Paving slabs - duplex pressing - up to 50 cm x 50 cm
- ▶ Other products up to 100 cm x 60 cm x 25 cm



The equipment

Our equipment is based on a one/two mould hydraulic press and a three/six mould hydraulic press, with up to 600 t of pressing force. Both presses are capable of producing a wide range of kerbstones, paving slabs and other products, with the three/six mould press optimized for maximum production. In addition to new and remanufactured machines we also offer a full compliment of moulds, mould filling, product/pallet handling systems, a large stock of spare parts, as well as refurbishments and relocations.



Volumetric doser



Service exchange units



Programmable vacuum trolley



Radial piston pump



Mould table



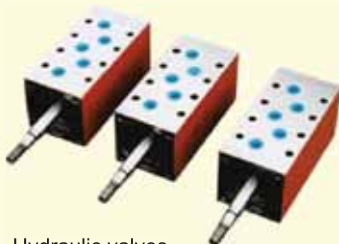
Electric table drives



Moulds



Hydraulic power unit



Hydraulic valves



Columns and hydraulic nuts



Encoders



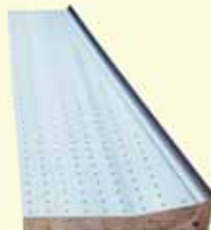
Liners/perforated plates



Spare parts (table drive gear wheel)



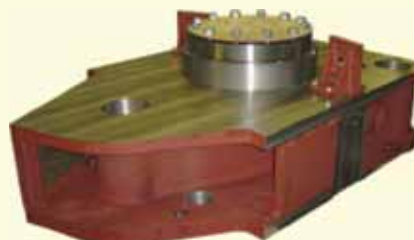
Control systems



Bottom former



Hydraulic cylinders



600 t press top table



Head filter plate and T-bar

Wil El Mil Engineering, your partner for:

Slab and kerbstone presses

Moulds for standard and special products

Product handling equipment

Pallet handling equipment

Concrete dosing equipment

Hydraulic control systems

Pneumatic control systems

Electrical control systems

Inverter drive systems

PLC/software upgrades and optimization

On-site and remote software support

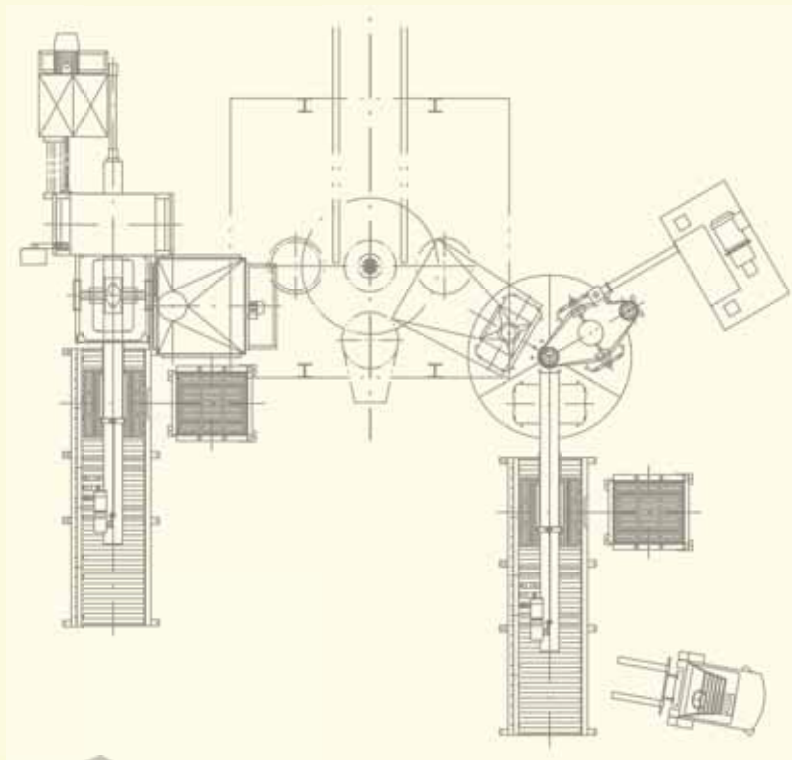
Refurbishments, upgrades and relocations

Spare parts

Installation and commissioning

Service and repairs

Technical advice and consultations



Wil El Mil Engineering Limited, 7 Ashville Road, Gloucester, GL2 5EU, England

Tel: +44 (0)1452 525259 Fax: +44 (0)1452 300654 Email: sales@wilelmil.co.uk www.wilelmil.co.uk